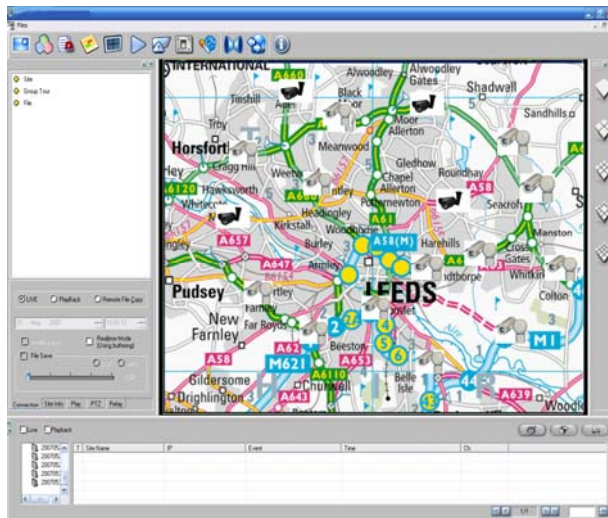


# Central Management Console

- Customisable Graphical User Interface
- Individual Device Representation
- Integration to Third Party Products
- Complete with Map Pack
- User Defined Fields
- LAN / WAN Device Status Checking
- Real Time Device checking
- Versatile Image Support



**Overview :-** The Central Management Console (CMC) is the software system for accessing & managing local & distributed devices (ANPR Stations etc). Points are known as nodes points, these nodes could be connected via a number of means, direct copper connection, fibre optic, wireless & optical wireless links. The CMC will interface with plettac products & will also integrate with third party systems.

**Details :-** The CMC is a fully configurable user interface for devices & systems distributed around a given area. The system is based on a control hierarchy where supervisors & senior Management are the only ones allow to change configuration. Devices & system Icons can be added at any time during the system, this may aid with the use of Rapid Deployable systems, this could be ANPR, CCTV Cameras or UVSS systems.

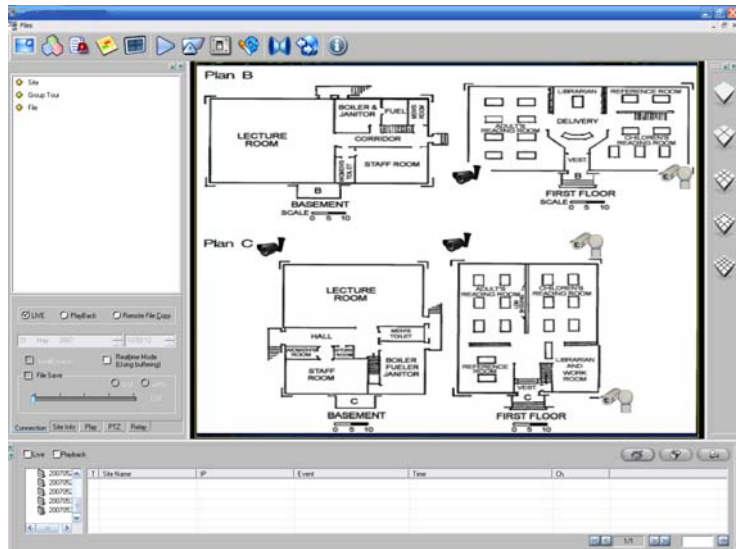


## Central Management Console

The system can be installed with multiple area maps, showing buildings or devices as Icons, once clicked on the next screen appears, which will be a more detailed map of the location or devices, with onscreen details of devices shown. Cameras whether used for ANPR or CCTV, alarm sensors, barriers etc can be shown as Icon's.

The CMC system provides a full management system for a Multiple site operation, allowing control or status checking of devices or systems connected.

One Example of the system use is to control ANPR cameras capturing information from a number of remote locations, to be able to reposition these or provide overview images from local CCTV cameras, the system could also change the configuration of the capture rate, or integrate the local system to extract information on captured images.



\* Specifications & Design Subject to Change Without Notice

## Other Products & Services

- CCTV Cameras
- Digital Recording Systems
- Biometric Access Control
- Access Control
- Pre-build & FAT Testing
- System Design
- IR Illumination
- Rapid Deployment Systems
- System Integration
- Fibre Optic Transmission Systems



For further information or assistance with any of the above products & services then please contact us **0844 800 1725** or [sales@plettac.co.uk](mailto:sales@plettac.co.uk), web site [www.pleltac-security.co.uk](http://www.pleltac-security.co.uk).