



plettac-security.co.uk



omega-line

Professional system products

Speed Vision Dome SVD 206

- 27x precision zoom lens
- superior dynamic range ExDR
- day/night - IR function
- pan speed 300°/s max.
- tilt speed 180°/s max.
- 360° continuous rotation
- privacy masking
- 180° auto flip/digital flip
- autofocus or manual function
- video motion detector
- alarm in-/outputs
- teach-in panorama tour
- 100 programmable positions
- clear or shaded segmented dome
- unrestricted horizontal view
- white balance
- iris mode
- average/peak ratio separately adjustable



* outstanding dynamic range

Description

The SpeedVisionDome is a high-performance security and surveillance unit suited for stand-alone applications as well as for integration into sophisticated security and management systems.

The high-quality 1/4" camera with 440,000 pixels and 27x precision zoom lens delivers outstanding picture and detail quality even in poor light conditions optionally with or without autofocus. Using the low-speed shutter allows for excellent pictures even under worst lighting conditions.

The innovative ExDR technology increases the dynamic performance providing high-contrast pictures even with extremely varying lighting conditions within one plot, e.g. object detection against light background. Within less than 2 seconds the dome reaches its programmed position including zoom, focus and automatically adjusted aperture.

The high-precision mechanical drive with septuplicate speed control enables fast and precise camera movements with highest repetition quality. Advanced features like 180° auto flip, zoom factor depending speed control, auto pan, auto return, positioning or panorama tour provide great facilitation for the surveillance staff.

Due to the pleasing design, the small dome diameter (6" / 152 mm only) and the wide range of mounting accessories, the SVD 206 can be installed unobtrusively at any location enabling discrete surveillance of individuals and properties.

Blanking of private zones provides acceptance of the camera when used in private or public spots. The "twist-lock" latch provides easy installation and service handling. The SVD 206 is remote controlled via RS 485 (remote FWE or polline mode) through one of the Funkwerk plettac control units, e.g. BMS, VAZ, PGEWin or p.o.s.a.

Applications

- Public places
- Airports
- Railway stations
- Traffic
- Casinos
- Department stores
- Shopping malls
- Public buildings
- Warehouses
- Sports facilities

**Investment safety
made in Germany**



Customer benefits

- **Detection of smallest details** with 27x precision zoom and 10x digital zoom



- **The extended dynamic range** supplies **excellent back lighted shots**. The innovative technology produces pictures with both dark and light areas being correctly exposed.



high speed shutter



standard speed shutter



ExDR mode

- **Low-light use (0,5 lux) day/night selection** for effective 24h-surveillance: color pictures during the day and monochrome pictures at night, additional infrared spots for improvement of night scenes. Even with 0,5 lux only the camera is more sensitive to light than the human eye and delivers respectable picture quality.



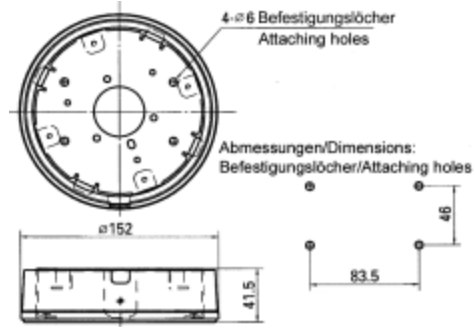
- **Outstanding colour picture quality** with a resolution of 480 TV lines
1/4" interline transfer CCD with high resolution (752 H x 582 V pixels) for pin sharp lifelike pictures
- **360° continuous rotation and 180° auto flip**
SVD 206 performs full 360° rotations preventing loss of any detail. Avoiding the picture to be upside down when tilting more than 90° two modes can be selected: Auto flip 180° pans the camera when reaching vertical 90° tilt. Digital flip digitally revolves the picture automatically upon reaching 135° tilt.
- **Mutable pan / tilt speed**
- The active **motion detection** feature automatically triggers an alarm in case of any change within the plot (e.g. movement). This plot is located within the home position.
- **Blanking of private zones** provides acceptance of the camera in public scenes. This function blanks selected zones protecting privacy of third parties (e.g. living space of neighbouring houses). The blankable area lays between 0° and 45° tilt.
- **Auto patrol, auto trace and contour program**
Auto patrol scans up to 100 preprogrammed positions within up to 3 storable auto patrol programs. The auto trace modus manually scans selected contours (30s max.) being stored in the camera. Upon activation of the auto trace mode the camera again scans the stored trace and restarts the procedure after a break of 30 seconds.
- RS 485 FWS or polling **remote control**
- **Small dimensions** allow discrete surveillance of individuals or objects.
- **Low installation investments** (multi purpose accessories)
- Auto focus after each camera movement and each zoom provides pin **sharp pictures any time**

**Investment safety
made in Germany**

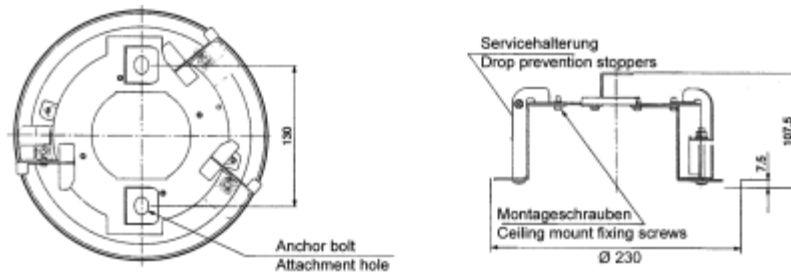


Accessories

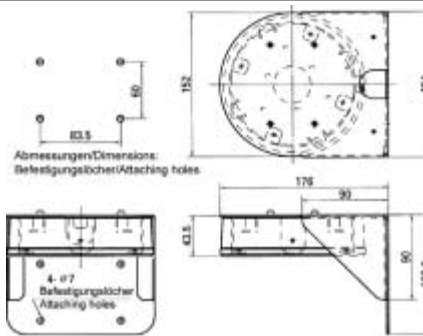
Ceiling bracket DH1



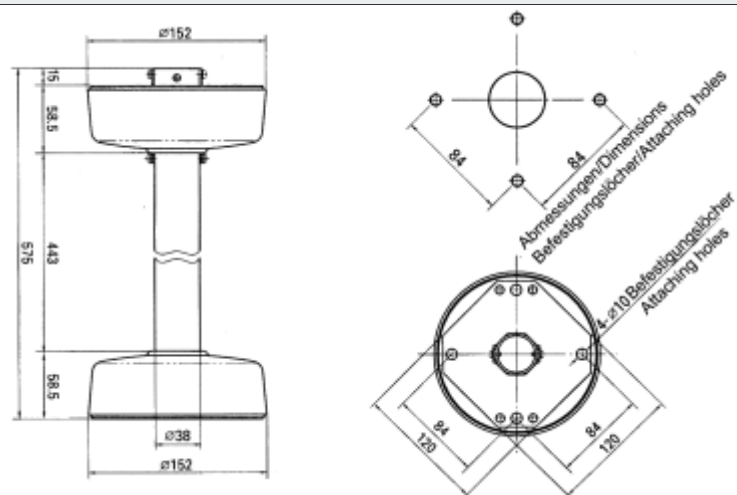
Ceiling tile kit DH2



Wall bracket WH1



Ceiling mount pole kit DH3



Investment safety
made in Germany



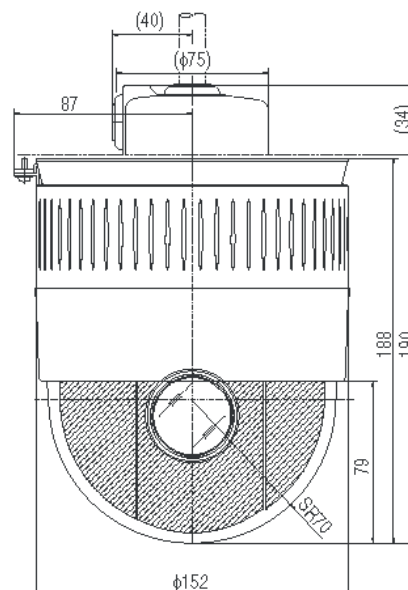
Technical Data

Video output	CVBS 1.0 V _{pp} , 75 Ω, screw terminal		
Light sensitivity (F 1.4) LSS* with 4-field integration sensitivity enhancement with LSS*	at 25 % level 2..... 32x (automatic, manual)	with LSS* 0.25 lux	without LSS* 0.9 lux
*low speed shutter			
Resolution	480 TV lines (lens wide limit, centre position)		
Pick-up device	1/4" type interline CCD		
Effective pixels	752 (H) x 582 (V) (440,000)		
TV system	PAL		
Synchronization	meshing/internal		
Signal-to-noise ratio	50 dB		
Shutter band standard	(1/50), 1/120, 1/250, 1/500, 1/1000, 1/2000, 1/4000, 1/10000		
Day/night function:	yes, tiltable IR-Cut filter		
Video detection:	yes, position 1 (home)		
Back light compensation (BLC)	OFF or BLC (4 patterns)		
White balance	auto/manual		
Camera title	16 characters		
Lens			
Focal length	3.8 to 103 mm		
Zoom objective	27x + 10x digital		
Maximum aperture	F 1.4 (wide) to F 3.0 (tele)		
Zoom speed	3.6 s ±0.5 s		
Focus speed	0.7 s ±0.5 s		
Autofocus	One push autofocus/EASY-AF (automatic focus upon any movement)		
Pan/Tilt			
Pan range	unlimited 360°		
Tilt range	0° to 180°		
Pan speed	0.5°/s, 1.2°/s, 2.8°/s, 6.7°/s, 16°/s, 36°/s, 80°/s, 300°/s		
Tilt speed	0.5°/s, 1.2°/s, 2.8°/s, 6.7°/s, 12°/s, 26°/s, 60°/s, 180°/s		
Auto pan	yes (including return to home position)		
Flip	DIGITAL/AUTO/OFF		
Private blanking	10 windows, 4 in one plot		
Contour program	3 varieties		
Control interface	RS 485		
Operating voltage	24 V AC ±10 % 50/60 Hz; 1.4 A		
Ambient operating temperature	-10 °C ... +50 °C		
Weight (incl. packing)	2.4 kg (3.8 kg)		
Dimensions ø x H (incl. packing)	152 mm x 190 mm (350 mm x 250 mm x 300 mm)		

Ordering data

SVD 206(W) without segmented dome, with correction lens and cover ring	728870601000
SVD 206(C) with clear segmented dome SVD 106	728870601100
SVD 206(S) with shaded segmented dome SVD 106	728870601200
Ceiling bracket DH 1	728870610200
Wall bracket WH 1	728870610300
Ceiling tile kit DH 2	728870610400
Ceiling mount pole kit DH3	728870610500
Weatherproof housing WG 1	728870610100

Dimensions



Subject to change without prior notice
 Technical revision: 12/2004
 SVD206/GB/002/1204

plettac Security UK Ltd
 Unit 39, Sir Frank Whittle Business Centre
 Rugby Warwickshire, CV21 3XH
 Tel +44(0) 1788 567811
 Fax +44(0) 1788 544549
 web Site : www.plettac-security.co.uk
 Email : sales@plettac-security.co.uk

