



Products of our professional CCTV system solutions



delta-line

Videodetection VD 200-I

- Object analysis on the basis of intruder detection
- Real-time video analysis
- High pixel resolution (CCIR)
- Outdoor and indoor detection
- Sabotage protection
- Easy configuration



Video motion detection

Video motion detector for outdoor and indoor surveillance applications

The VD 200-I system works on the basis of adaptive algorithms. A new generation of processors coupled with highly complex evaluation algorithms permit the visualization of events in video real time. This ensures the rapid detection and analysis of situations and objects. An intuitive interface enables the user to freely configure alarm zones.

Effective protection

The technical performance of the intelligent VD 200-I system makes automatic site surveillance possible, thus demanding only a minimum of user personnel. The visualization of the alarm condition in real time enables effective management of security personnel as well as identification and tracking down of offenders.

High level of reliability

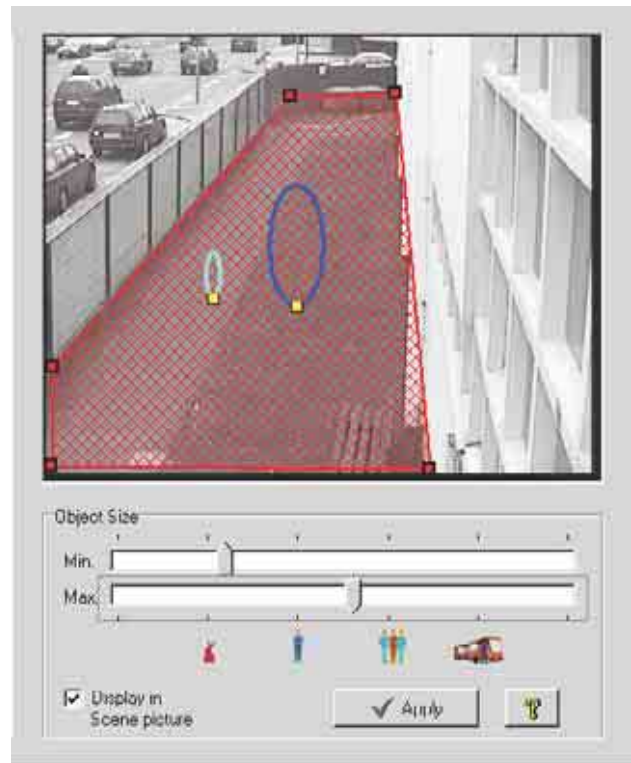
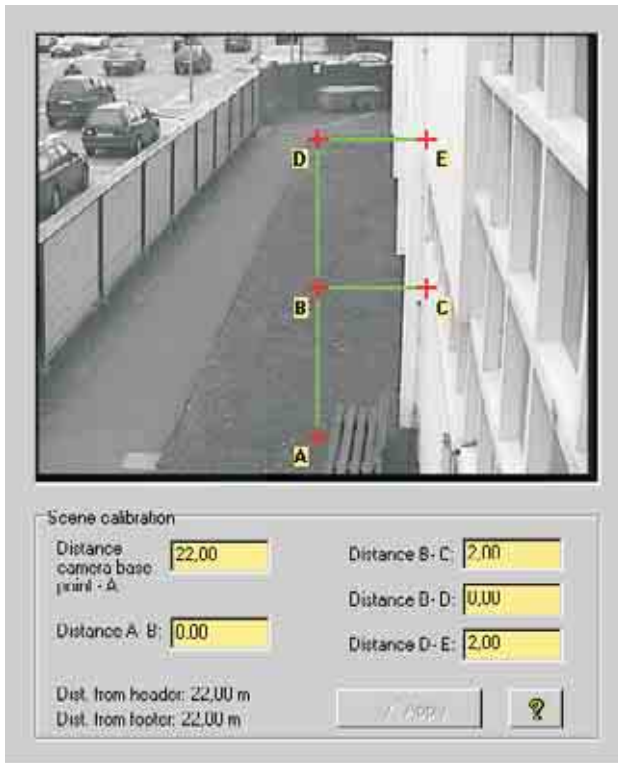
The alarm triggering functionality of VD 200-I is extremely reliable. This is achieved through adaptive picture evaluation, perspective-corrected object recognition and intelligent alarm situation analysis.



VPB-A/AP board for 1 or 2-channel evaluation

investment safety
products and solutions made in germany





Control

- Activation of evaluation

Time-based switching points (date, time)

Contact-based switching points (4 digital input contacts)

Event-based switching points

User input (graphical layout)

- Reaction to alarm events and errors

Signalling via 4 digital output contacts

Storage of alarm pictures on HD

Storage of alarm sequences on HD

Network-wide distribution of alarm messages

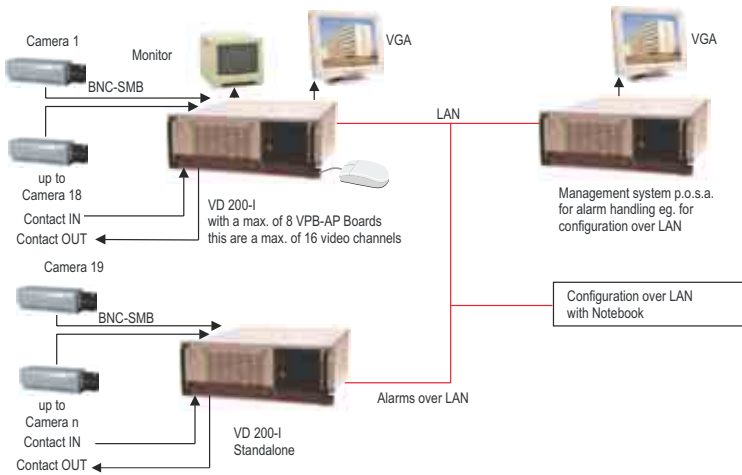
Sound output

Freely definable for each alarm area

- Documentation of all actions and reactions in a log file
- Control of camera-specific parameters
- Automatic reload in the event of a power failure
- Alive function for channel monitoring

Archiving

- Alarm analysis tool for optimization of parameter data

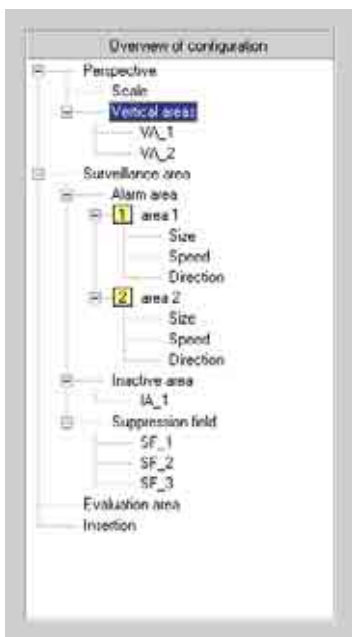
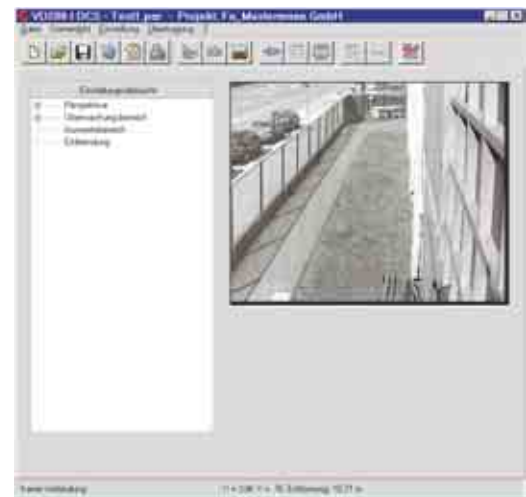


Modular system concept based on plettac open security architecture (p.o.s.a.)

VD 200-I can be customized for integration in subsystems or can be implemented as a stand-alone solution. It is also easy to integrate VD 200-I in an existing communication infrastructure or in highly complex management systems. The ability to use additional drivers means that it is possible to extend the system functionality at any time.

Requirement-specific system configurability:

The object size, scene perspective, object direction and speed within the evaluation area can be configured by the user in line with requirements. All the technical parameters which are neither object nor scene-related are automatically configured by the system. Ergonomic configuration handling is an added advantage of this user-friendly system.



Graphical user interface

- User-friendly Windows interface for scene-related alarm configuration
- Definable object properties in each alarm area
- Testing of configured alarm triggering setup using simulation objects
- Documentation of configuration data in the form of a printout or as a hypertext file
- High level of security thanks to dongle, password and encryption of parameter data
- Storage of the video picture used for configuration
- Status display of evaluation channels
- Inter-network configuration of all the detection channels implemented throughout the system

Technical data for VPB-A/AP board		
Video	Number of video inputs	1 to 18*
	Number of video outputs	1 to 18*
	Loop-through outputs	1 to 18*
		*(1-2 inputs/outputs per board, max. 9 boards)
Inputs/Outputs	Optocouplers	4 each per board
Ethernet (T-Base)	Speed	10/100 Mbit/s
Video standards	PAL, NTSC	
Video signal	CVBS	1.0 Vpp at 75 Ω +3 dB - 6 dB
Technical data for industrial PC		
19" standard rack	Dimensions	4 HU
Interfaces	2 x RS-232-C, one of which can be converted to RS-422	
	Baud rate	1200 ... 19200 baud
Power supply	1 x LPT1	
	Supply voltage	90-132/180-264 V AC
	Frequency	47 ... 63 Hz
Environmental conditions	Power consumption	max. 500 VA
	Temperature range	+5 °C ... +45 °C
Tests	Humidity	90 % without condensation
	Resistance to emissions and irradiation (EMC)/CE safety	EN50081-1/EN50082-2 EN60950/VDE 805

Detection properties

- Evaluation in video real time through DSP multiprocessor board
- Pixel resolution of approx. 28 000 pixels
- Maximum detection depth of 40 m
- Evaluation possible in CCIR resolution
- Camera sabotage protection (checks for sync signal, darkening and misalignment)
- Perspective evaluation of the scene
- Automatic adaptation to various ambient situations, e.g. shadows, snow, rain and fog.
- Reliable alarm triggering thanks to the possibility of defining object properties for individual alarm areas: direction of movement, speed and size
- Minimum rate of undesired alarms thanks to freely definable alarm areas, inactive areas and suppression fields
- Up to 32 freely definable alarm areas in each surveillance scene

Subject to change without notice
 Technical Status 08/2004
 VD2001/GB/002/0904