



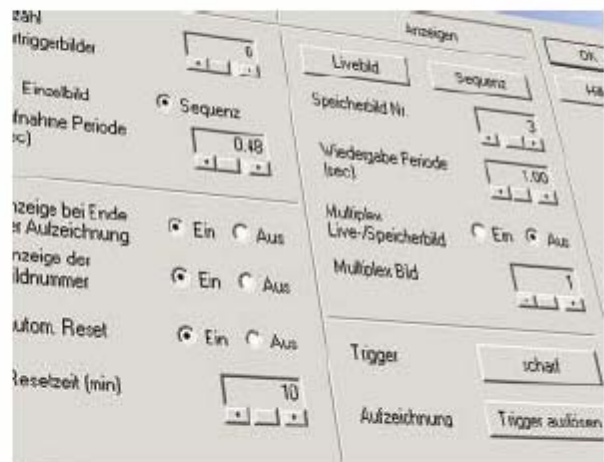
- Wall mounting with secure concealed cable entry
- Camera programming via PGEWin or dedicated control keyboard
- Reverse compatibility with earlier cameras
- Easy installation without expensive dismantling
- Wide variety of options providing additional camera features



The versatile range of hardware for use inside and outside provides perfect operation for CCD-cameras.

Description

Funkwerk plettac CCTV system solutions are perfectly tailored to suit customer needs and conditions. Our professional accessories enable solutions to meet the most diverse requirements while providing outstanding reliability and retaining extensive opportunities for further expansion. They contribute to the construction of user-friendly, flexible, perfect-fit solutions. The secure concealed wiring and connections increase safety and guard against criminal damage. Plug and play capabilities ensure that hardware and software accessories are a quick and cost-effective means of expanding the already extensive performance of plettac electronics cameras past and present. Providing outstanding value our accessories are also downwards compatible – able to be combined with new developments ensuring that resources are always used to the full.



Extensive additional functions are incorporated quickly and easily by straightforward software installation procedures.

Mechanical accessories



◀ Connection box AGW 838

Enabling easy installation and servicing, this low voltage extension box for outside cameras has an integral weather-proof click-on cable connector to link the camera to other system components. Suitable for low voltage operation and equipped with weatherproof glands. The robust housing is protected against rust.



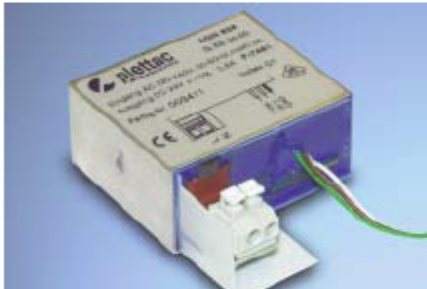
◀ Wall bracket 1

Enabling perfect camera alignment and positioning, inside or outside, this flexible bracket made of a precious steel alloy with concealed wiring and integrated connection box can be used to mount a camera to a wall, ceiling or mast.

Tube extension kit (not illustrated)

This kit enables longer lenses to be fitted to outdoor cameras. It includes a lens hood extension and three spacer rings to provide for a total length of 111.5 mm.

Electrical accessories



◀ Power supply AGN 838

This 230 V power supply can be incorporated into either the AGW838 or the wall bracket 1 connection box to deliver the required voltage.

Power supply SN 830 (not illustrated)

This power supply provides indoor cameras with 230 V.



◀ Picture memory SAM 4

This unit expands the standard memory by 4 fields, allowing the camera to hold up to 8 fields in its alarm picture memory.

Housings for unusual conditions



◀ Housing W 2/WN 2

This weather-proof housing permits camera operation under extreme conditions and is designed to accommodate longer lenses. The WN 2 housing has an integral power supply. Both camera housings have a thermostat-controlled window heating and overvoltage protection on in-coming cabling.

RS 830 W/RS 830 CW (not illustrated)

These kits enable indoor cameras to be fitted into housings W, W-N, CW and CW-N.

Control equipment



◀ PGEMWin programming unit

This equipment enables simple intuitive programming and control of all types of lens and pan/tilt movement as well as the downloading of software accessory options. PGEMWin consists of a Windows® 95/98/ 2000/NT software package, connecting cables for outdoor cameras, 15-pin D-sub cables for indoor cameras and a security module. (The security module stores the necessary credit codes required for downloading upgrades.)

BMS-BMK 802/802 VS (not illustrated)

This keyboard enables the programming of up to 32 cameras, together with their lens and pan/tilt functions.

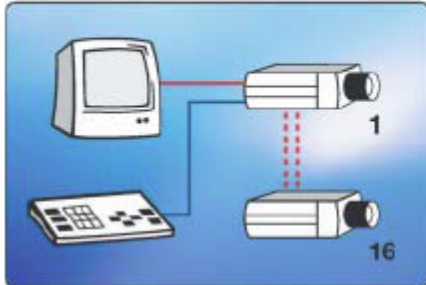
Operating instructions appear on the monitor as menus inserted over the camera picture.

Cables

Camera cables 751-6/751-7 (not illustrated)

Both halogen-free cables are suitable for deployment in the open or buried underground and contain data communication and control wiring. The sheath is UV-, oil-, hydrolysis- and microbe-resistant as well as being particularly resilient and resistant to cuts or abrasions. The 751-6 camera cable with coaxial, data and control elements is suitable for mains powered cameras with many accessories. The 751-7 cable is intended for low voltage static cameras.

Software options



Matrix function

Matrix function

Arranged in a bus-structure the cameras themselves support switching so that up to 16 cameras can be selected without the need for a video switcher or extensive cabling.

Lens control (not illustrated)

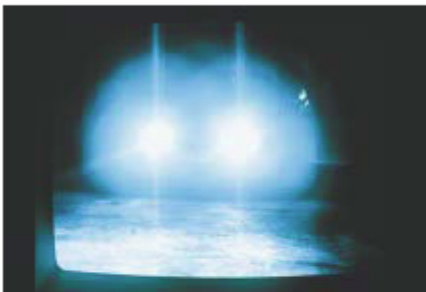
Using the RS 485 interface to control the lens, 8 zoom and focus positions can be stored, and the zoom and focus speeds selected.

Security mode (not illustrated)

Whenever the camera is brought into service a double security check is automatically carried out. If it does not read the correct security code the camera remains inactive.

Picture reversal (not illustrated)

This software produces a mirror image by rotating the picture about a vertical axis. This is used on station platforms for example, where it serves as a rear view mirror. The alarm picture memory retains pictures in their mirror image format.



without peak light blanking

Peak light blanking

Where extremely bright lights occur (for example with car headlights) the white area is blanked out by being overlaid with black or grey and the aperture increased slightly to give a well-balanced picture.

RTC clock (not illustrated)

This integral real time clock enables the inclusion of date and time in the picture. It supports the operation of 4 different time schedules and can operate in isolation or be synchronised with the control centre.

Picture memory expansion (not illustrated)

Using the software expansion option the picture memory of the camera is increased by 2 fields with a sample rate of 10 bits. The hardware option, SAM 4 provides an extra 4 alarm pictures.



with peak light blanking

Technical data	
Connection box AGW 838	
Cable entries	2 glands
Cable diameter	5.5 mm-17 mm
Mounting	2 threads UNC 1/4"- 20
Protection class	IP66
Weight, gross/net	0.85 kg/0.7 kg
Dimensions, gross/net	265 x 163 x 74 mm/176 x 65 x 51 mm
Wall bracket 1	
Swivel/tilt range (hor./vert.)	±165°/±165°
Load (static)	max. 5 kg
Weight, gross/net	2.7 kg/1.7 kg
Fully extended length	345 mm
Horizontal movement range	186 mm
Pack dimensions	426 x 329 x 228 mm
Power supply AGN 838	
Input voltage	230 V AC ±15%/50 Hz
Output	24 V DC (stab.) output for mains lock
Power output	0.8 A
Power supply type	switched power supply
Weight, gross/net	1 kg/0.85 kg
Dimensions, gross/net	265 x 163 x 74 mm/176 x 65 x 51 mm
Picture memory SAM 4	
Storage capacity	4 fields
Sample rate	10 bit
Weight, gross/net	60 g/15 g
Dimensions, gross/net	245 x 175 x 35 mm/35 x 18 x 7 mm
Camera housings W 2 / WN 2	
Storage temperature	-40° C ... +70° C
Operating temperature	-35° C ... +55° C (+35° for cameras in prolonged use)
Vibration resistance	5g, f=10-70 Hz, s=0.5 mm
Protection class	IP 66 (DIN 40050), ground isolated from housing
Mount options top,bottom	each 2 threads 3/8", max 6 mm deep
Weight, W 2 (gross/net)	4.5 kg/3.7 kg without camera
Weight, WN 2 (gross/net)	5.3 kg/4.5 kg without camera
Dimensions, gross/net (l x w x h)	546 x 226 x 248 mm/387 x 128 x 128 mm
Power supply SN 830 i	
Input voltage	230 V AC +6%/-15%; 50-60 Hz
Output	20 V DC ±2 V (max. 400 mA) via 15 pin D-Sub connector
Power requirement	max. 15 W
Operating temperature	-20° C ... +55° C
Protection class	Protection class II
Weight, gross/net	0.65 kg/0.6 kg
Dimensions, gross/net (l x w x h)	264 x 68 x 60 mm/96 x 63 x 50 mm

Order numbers	
SAM 4	943038180100
AGN 838	943038190200
AGW 838	943038190300
Camera housing W 2	943038150100
Camera housing WN 2	943038150500
RS 830 W	943038150200
RS 830 CW	943038160200
Wall bracket 1	943038190500
Tube extension kit	943038190600
Camera cable 751-6	728875560600
Camera cable 751-7	728875560700
PGEWin	943039110100
PGE WM 2	941716110900
Activating software	GXT0717
Mounting indoor camera in CW, CW-N or CW-S	GXT0539
Mounting indoor camera in W, W-N, W2, WN2	GXT0540
Mounting AGN 838 in AGW 838 or wall bracket 1	GXT0543
Software option Peak light blanking	GXU0201
Software option Security mode	GXU0204
Software option Picture memory expansion	943039120100
Software option Reversed picture	943039120200
Software option Matrix function	943039120900
Software option RTC clock	943039130300
Software option Lens control	943039130500
Multifunction keyboard	943522170100
Top cover BMS/BMK	943522170200
Software BMS 802	943523110700
Software BMS 802 VS (variable speed)	943523110800
Power supply SN 830 i	764305017000
WN coupler/S (plug strip)	943035120700
WN coupler/B (socket strip)	943035120600
WN coupler/B-E (single cable)	943035120800
Tube adapter TA 87	GXE1535
Tube 76 S 180	GXE1528
Guide plate FP 70	943209131500
Guide plate FP 70	943031160300
Camera base mounting kit	943021141000
Adjusting plate ES 76	943021160100
Adjusting plate ES 82	943031160400

Subject to change without prior notice
 Technical revision : 01/2005
 Accessories/GB/001

plettac Security UK Ltd
 Unit 39, Great Central Way, Butlers Leap, Rugby, CV21 3XH
 Tel : 0844 800 1725 Fax : 01788 544 549
 Email : sales@plettac-security.co.uk, web : www.pleltac-security.co.uk

